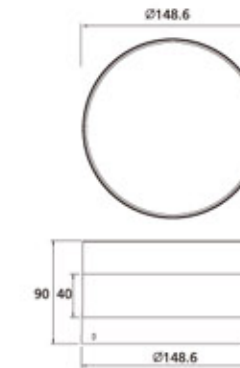
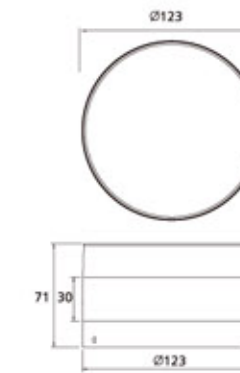
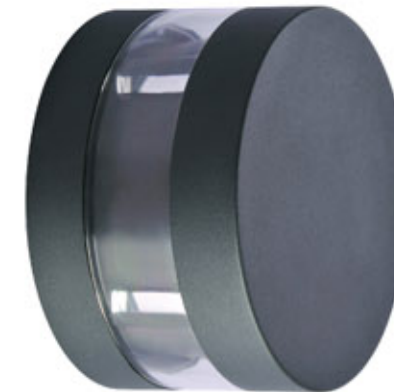


## PRODUCTS CHARACTERS:

- Body: Made of high quality die-cast aluminum with treatment of corrosion protection and UV-proof powder coating.
- Diffuser: PMMA.
- Gasketing: Made of thermostable silica gel to improve protection class.
- Fastener: Made of stainless steel with high intensity and corrosion protection.
- Application: Facade lighting, wall of buildings, villas, parks, gardens, hotels and so on.
- Finish: Matt black as standard. Matt red, Matt coffee, Matt grey, Dark grey, Dark bronze any other RAL color is available upon request.



<b>KTWL1305(R)</b>		Single Color		
● Red	LED	1Wx4	90-260V	50/60Hz
<b>KTWL1305(G)</b>		Single Color		
● Green	LED	1Wx4	90-260V	50/60Hz
<b>KTWL1305(B)</b>		Single Color		
● Blue	LED	1Wx4	90-260V	50/60Hz
<b>KTWL1305(Y)</b>		Single Color		
● Yellow	LED	1Wx4	90-260V	50/60Hz
<b>KTWL1305(WW)</b>		Single Color		
● Warm White	LED	1Wx4	90-260V	50/60Hz
<b>KTWL1305(W)</b>		Single Color		
○ White	LED	1Wx4	90-260V	50/60Hz
<b>KTWL1306</b>		RGB(Flash)		
● RGB	LED	4W	175-250V	50/60Hz
<b>KTWL1307</b>		RGB(Fade)		
● RGB	LED	4W	175-250V	50/60Hz
<b>KTWL1308</b>		RGB(Pre-programmed)		
● RGB	LED	12W	90-260V	50/60Hz

For video about lighting effect, please visit website.

